



HALE HAMILTON[®]

Excellence in Pressure & Flow Control

A **CIRCOR** International, Inc. Company

Flanged Non-Return Valve

Description

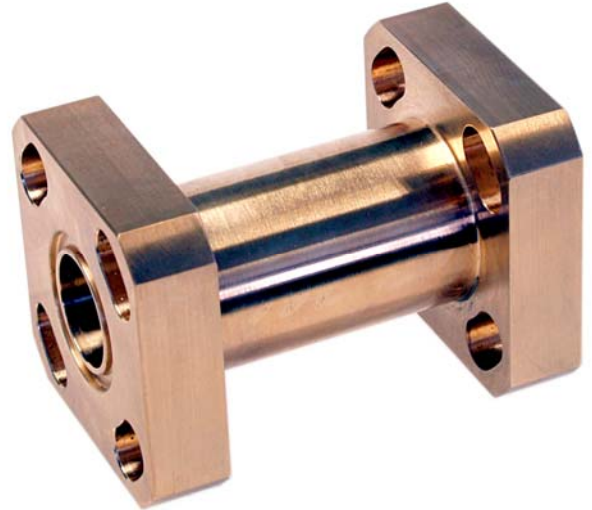
NRS is a range of spring-loaded, non-return or check valves. They are suitable for use with gases or liquids to prevent reverse flow in high-pressure lines.

The main closing force is provided by the process pressure. The spring ensures that the valve will close at any orientation.

The internal design of the valve ensures that there is minimal restriction to flow.

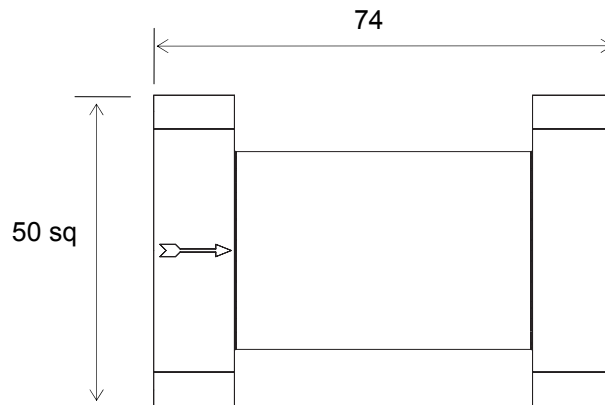
Connection is via a flange which mates with the stop valves and manifolds in our flanged valve manifold system.

A version is available suitable for use with oxygen including medical oxygen.



Typical Dimensions

in mm except where shown otherwise



In addition to our standard product range, we have an extensive range of special designs and offer a custom build service. Contact our Sales office if you don't see what you want in our catalogue.

The information contained within this catalogue is for reference purposes only and is subject to change.

When selecting a product, the total system design must be considered to ensure safe, trouble free performance. Component function, material compatibility, adequate ratings, proper installation, operation and maintenance are the responsibility of the system designer and user.

Hale Hamilton (Valves) Ltd
Cowley Road, Uxbridge, UB8 2AF, UK
Tel: 01895 236 525
www.halehamilton.com



HALE HAMILTON
Excellence in Pressure & Flow Control

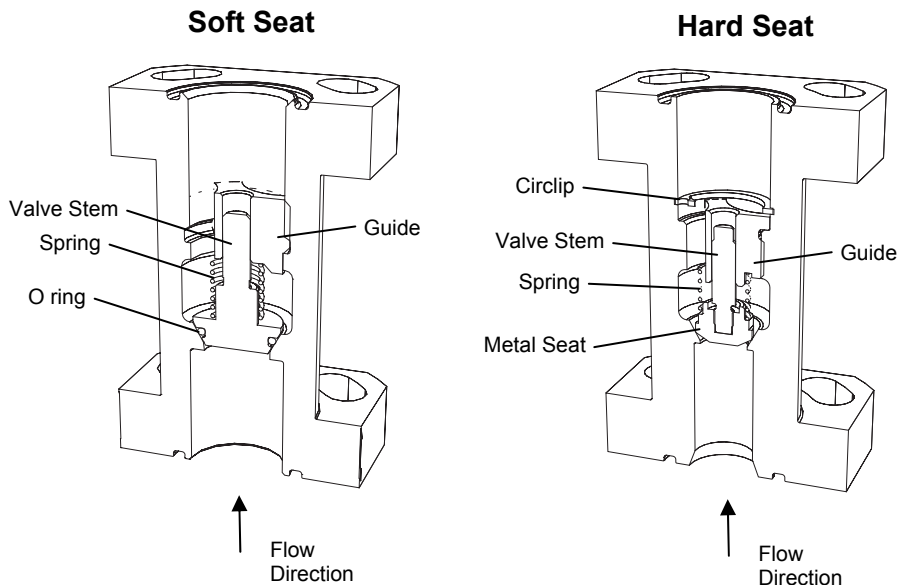
A CIRCOR International, Inc. Company

Flanged Non-Return Valve

Ordering information

Type Number:	NRS38 Mk9/OXB	NRS2 Mk54
Order Code:	N108159	N110201
Service:	Oxygen	Industrial gases
Seat:	Hard	Soft
Maximum Working pressure:	420bar (adiabatic shock tested to 350bar)	420bar
Nominal Bore:	9.5mm	13.5mm
Body and Bonnet Material:	Brass	Ni Al Bronze
Valve Stem Material:	Phosphor Bronze	Ni Al Bronze
Spring Material:	Phosphor Bronze	Stainless Steel
Seat Material:	Copper	N/A
O ring Material:	N/A	Nitrile
Weight:	0.63kg	0.55kg

How it Works



Pressure applied in the normal direction opens the valve and allows flow. Pressure applied in the reverse direction closes the valve and prevents flow. A light spring holds the valve closed when there is no pressure.

In addition to our standard product range, we have an extensive range of special designs and offer a custom build service. Contact our Sales office if you don't see what you want in our catalogue. The information contained within this catalogue is for reference purposes only and is subject to change.

When selecting a product, the total system design must be considered to ensure safe, trouble free performance. Component function, material compatibility, adequate ratings, proper installation, operation and maintenance are the responsibility of the system designer and user.

Hale Hamilton (Valves) Ltd
Cowley Road, Uxbridge, UB8 2AF, UK
Tel: 01895 236 525
www.halehamilton.com