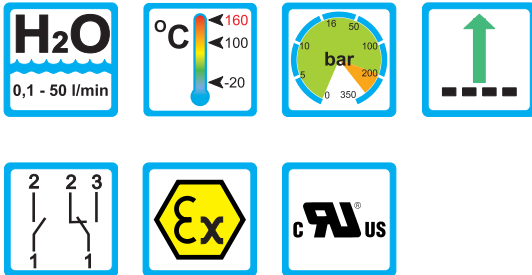


# Flow Monitor

## DWM



### Range of Application

#### Operation

- Float measuring principle

#### Application

- Cooling systems and cooling circuits
- Mechanical engineering
- Medicine technology
- Pharma industry
- Chemical industry
- Research and development

#### Features

- High reliability
- High switch accuracy
- Wide switch range
- Infinitely variable switchpoint, adjustment through user
- EX-version to ATEX available
- High pressure resistance
- Threaded connection, special threads on request

#### Installation hints

- The operating instructions for DWM must be observed!
- Download: [www.meister-flow.com](http://www.meister-flow.com)

### Operating Data

Operating pressure max.	200 bar (Brass) 300 bar (Stainless steel)
Pressure drop	0,02 - 0,2 bar
Maximum temperature	100 °C (optional 160 °C)
Accuracy	±5 % of full scale

### Measuring Ranges

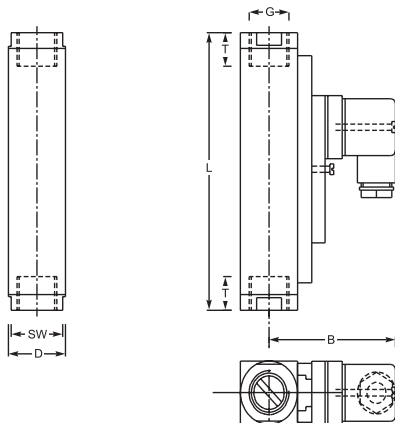
Type	Flow ranges for H <sub>2</sub> O at 20°C <sup>(1)</sup>		
	[l/min]	[gph]	[gpm]
DWM-1,5	0,1 - 1,5	1,5 - 23,8	
DWM-3	0,2 - 3	3,0 - 47,5	
DWM-8	0,3 - 8	5,0 - 127,0	
DWM-12	1 - 12	16,0 - 190,0	
DWM-18	2 - 18	32,0 - 285,0	
DWM-35	3 - 35	50,0 - 555,0	
DWM-50	4 - 50	65,0 - 790,0	

<sup>(1)</sup> The specified data are switch-off points, other switch ranges on request.

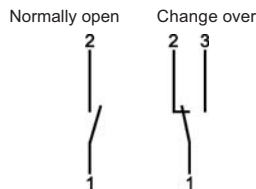


# Technical Data

## Mechanical drawing



## Connection diagram



## Summary of types

Type:	Overall dimensions [mm]							Weight approx. [g]
	SW	D	B	G	DN	T	L	
<b>DWM-1,5</b>				1/4"	8	14		
<b>DWM-3</b>	27	30	71	3/8"	10	19	131	800
<b>DWM-8</b>				1/2"	15	19		
<b>DWM-12</b>								
<b>DWM-18</b>	27	30	71	1/2"	15	19	146	800
	32	35		3/4"	20	17	174	960
<b>DWM-35</b>	34	40	76	3/4"	20	18	152	1450
<b>DWM-50</b>	40	40		1"	25	19	156	1450

## Electrical Data

<b>Change over</b>	250V • 1,5A • 50VA <sup>(2)</sup>
<b>Normally open</b>	250V • 3A • 100VA

**ATEX II 2 G Ex mb II T6 & ATEX II 2 D Ex tD A21 IP67 T80 °C**  
**ATEX II 2 G Ex mb II T5 & ATEX II 2 D Ex tD A21 IP67 T100 °C**

<b>Change over</b>	250V • 1A • 30VA
<b>Normally open</b>	250V • 2A • 60VA

<b>Change over M 12x1 (-20 °C - 85 °C)</b>	250V • 1,5A • 50VA <sup>(2)</sup>
--	-----------------------------------

<b>Normally open M 12x1 (-20 °C - 85 °C)</b>	250V • 3A • 100VA
--	-------------------

<b>Change over SPS</b>	250V • 1A • 60VA
------------------------	------------------

### Ingress Protection:

IP65: plug connection DIN 43650 Form A

IP67: 1 m sealed in cable, (with EEx-version 2 m)  
 or plug connection M 12x1

### Output Signal

The contact opens / changes when the flow decreases below the set point.

### Power supply

Not required (potentialfree reed contacts)

### Plug types

Other plug types or cable lengths on request

<sup>(2)</sup> Minimum load 3 VA

## Material

### Brass Version

#### Wetted parts:

Float:	Brass nickel-plated
Gaskets:	NBR (optional FKM, EPDM) <sup>(3)</sup> Brass
Threaded rings: (only DWM-35 (1"), DWM-50 (1"))	Brass
Centering washer: (DWM-35, DWM-50)	Brass nickel-plated
Fittings: (not for DWM-35, -50 (1"))	Brass nickel-plated
All other wetted parts:	Brass nickel-plated

### Stainless Steel

#### Wetted parts:

Float:	1.4571
Gaskets:	FKM (optional NBR, EPDM) <sup>(3)</sup>
Threaded rings: (only DWM-35 (1"), DWM-50 (1"))	1.4571
Centering washer: (DWM-35, DWM-50)	1.4571
Fittings: (not for DWM-35, -50 (1"))	1.4571
All other wetted parts:	1.4571

<sup>(3)</sup> Other gaskets materials on request

